

## HF600

Vision Measurement Systems

Optical Comparators

Software



# HORIZONTAL FLOOR STANDING OPTICAL COMPARATOR

## HF600

Well known throughout the world for superior value and exceptional measuring performance across the full measuring range and at all magnifications, the HF600 sets the standard in all applications from the QC lab to the production floor. The HF600 comparator has a four-position lens turret for instant selection of optional magnification lenses. Inserting the optional OV2 or TOV2 Video Camera System converts the comparator into a video metrology system. Ideal for use over a broad spectrum of industries and applications, the HF600 is designed and built to satisfy the requirements of measuring small to large work pieces with total precision, ruggedness, and efficiency. The HF600 utilizes 2D measurement software for geometries like diameters, radius, angles, lines, points, and for skew correction. Advanced software can also provide many tools such as CAD file import, CAD data export for reverse engineering, standard and custom reports, and Ethernet networking.

### FEATURES AND SPECIFICATIONS

- 12" x 8" X-Y travel workstage (300 x 200mm)
- All metal construction with nickel plated stage tooling plate
- 24" (600mm) diameter screen with precision cross lines and overlay clips
- Motorized X and Y axes standard
- Two-axis power drive via joystick and variable speed control for fine adjustment
- Projection lens turret with four lens capacity (lenses not included)
- Turret mounted condenser system and yellow/green filter and provision to mount further accessories
- Stage Weight Capacity: 330lbs (150kg) (evenly distributed)
- Workstage capacity between centers: 17.5" (440mm)
- Fully retractable duplex fiber optic surface illumination
- 20µin (0.5µm) resolution Heidenhain linear scales
- Screen driven rotary Q-axis with 1' resolution
- Available with MetLogix™ M1 tablet, M2 or M3 measuring software with touch screen and PC, or Mx-Series digital readout systems



Click the QR code to view the HF600

### OPTIONS

- Six interchangeable lens magnification including 10x, 20x, 25x, 31.25x, 50x and 100x
- Optional 5x fixed or 5x interchangeable on a 3-lens turret available by special order
- Interchangeable OV2 video camera system with a 6.5:1 zoom lens
- Interchangeable TOV2 telecentric video camera systems with choice of 0.16x, 0.3x or 0.5x fixed magnification lenses
- Extended Stage Travel: 20" (500mm) X-axis; 8" (200mm) Y-axis
- Fully automatic CNC controls
- Automatic Optical Edge Detection
- Automatic Video Edge Detection available only with OV2 and TOV2 video camera systems
- Swing-away lamp house
- Extensive line of accessories
- Complete with full canopy and curtains



HF600



## OPERATOR INTERFACE

Feature	M1	M2	M3	Mx100	Mx200
Optical edge detection (Option)	x	x	x	—	x
Geometric Functions	x	x	x	—	x
Graphic Based Constructions	—	x	x	—	x
Tolerancing	—	x	x	—	x
Data export reporting	x	x	x	x	x
Part programming and playback	—	x	x	—	x
Operating system	MLX Android™	MS Windows®	Windows®	MLX Android™	MLX Android™
Part view display	—	x	x	—	—
Feature annotation	—	x	x	—	—
CNC drive option	—	—	x	—	—
Video edge detection (option)	—	—	x	—	—
CAD file import and export option	—	—	x	—	—
Software developer	MetLogix™	MetLogix™	MetLogix™	MetLogix™	MetLogix™

## SPECIFICATIONS

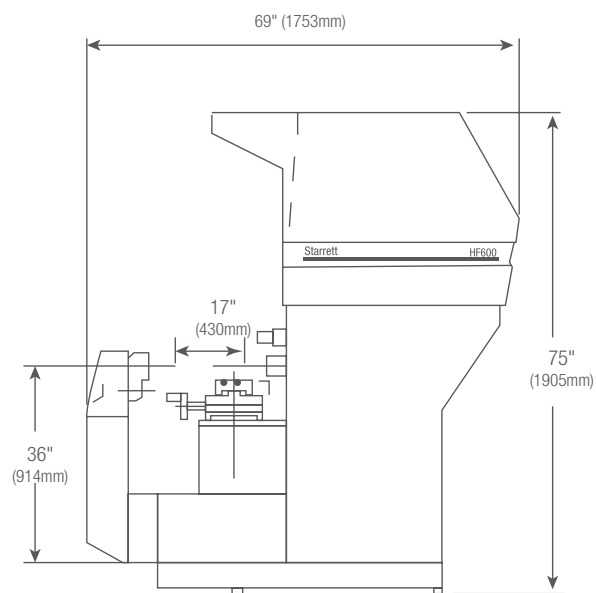
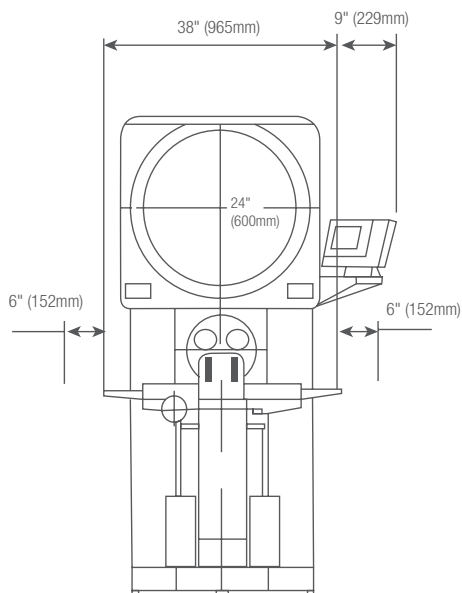
	HF600
Horizontal Travel	12" (300mm)
Vertical Travel	8" (200mm)
Focus Travel	3" (75mm)
Top Plate*	25 x 9" (635 x 230mm)
Image	Erect and reversed

\*With machined slots for easy fixturing

## WEIGHT AND DIMENSIONS

	HF600
Net Weight	1340lbs 610kg
Shipping Weight	1500lbs 680kg
Crated Dimensions	81 x 49 x 89" 206 x 125 x 226cm

## HF600 DIMENSIONS



STARRETT PRODUCT LINES

Band Saw Blades

Force Measurement

Jobsite & Workshop Tools

Laser Measurement

Metrology Equipment

Precision Granite

Precision Ground Solutions

Precision Measuring Tools

PTA & Hand Tools

Service

Webber Gage Blocks

METROLOGY SYSTEMS



[www.starrett-metrology.co.uk](http://www.starrett-metrology.co.uk)

Follow us!



**Starrett**<sup>®</sup>

Phone: 00 44 (0)1835 863501 | Email: [Metrology@starrett.co.uk](mailto:Metrology@starrett.co.uk)

Oxnam Road, Jedburgh TD8 6LR Scotland UK