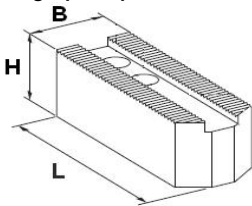


Futtertyp / Chucktype: **B-212**
 Hersteller / Maker: **Kitagawa**
 Nutbreite / Slot width: **21 mm**
 Verzahnung / Serration: **1,5x60°**

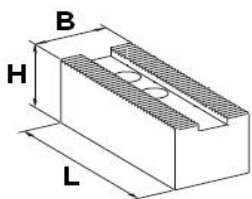


Angespitzt / pointed

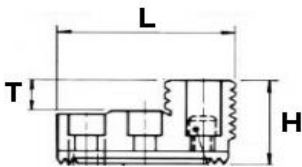


Weiche Aufsatzbacken / Soft Top Jaws				Satz = 3 Stück / Set = 3 pieces	
L	B	H	kg	article no.	
145	50	50	6.90	KJSJ-212L-145-P	

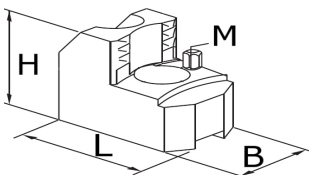
Flach / Flat



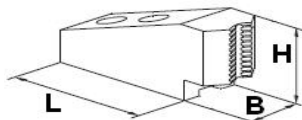
Weiche Aufsatzbacken / Soft Top Jaws				Satz = 3 Stück / Set = 3 pieces	
L	B	H	kg	article no.	
130	50	50	6.30	KJSJ-212-F	
130	80	50	10.20	KSJ-212W-80x50-F	
130	80	80	16.80	KSJ-212W-80x80-F	
130	100	100	26.10	KSJ-212W-100x100-F	
130	50	80	9.90	KJSJ-212H-80-F	
130	50	100	12.60	KSJ-212H-100-F	
130	50	120	15.30	KSJ-212H-120-F	
130	50	140	18.30	KSJ-212H-140-F	



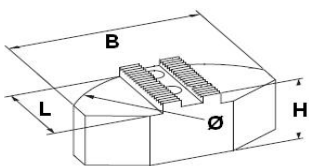
Gehärtete umkehrbare Stufenbacken / Hard top reversible jaws step type				Satz = 3 Stück / Set = 3 pieces	
L	B	H	T	kg	article no.
103	50	52	17	3.60	HB12N1



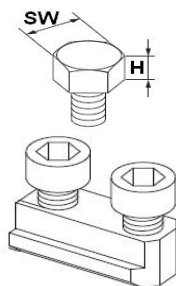
Gehärtete Greiferbacken / Hard top gripper jaws						Satz = 3 Stück / Set = 3 pieces	
L	B	H	M	Spannbereich / gripping range	kg	article no.	
117	50	49	M8	50-100 mm	5.15	KGJ-212-5010	
102	50	49	M10	100-150 mm	5.00	KGJ-212-1015	
90	60	65	M10	150-200 mm	3.50	KGJ-212-1520	
115	60	65	M10	200-300 mm	5.50	KGJ-212-2030	



Gehärtete Greiferbacken für kleine Durchmesser / Hard top gripper jaws for small diameters					Satz = 3 Stück / Set = 3 pieces	
L	B	H	Spannbereich / gripping range	kg	article no.	
124	45	59	5-30 mm	4.20	KGJ-212-0530	
112	45	57	30-50 mm	4.50	KGJ-212-3050	



Segmentbacken, Ø 3 Backen = 315mm / Pie Jaws Ø 3 Jaws = 315mm					Satz = 3 Stück / Set = 3 pieces	
L	B	H	Material	kg	article no.	
110	240	60	Stahl / steel	20.50	KPJ-212	
110	240	78	Aluminium	10.50	KPJ-212-A	



Auflagebolzen M8 (M10) / Screws for gripper jaws M8 (M10)				Satz = 3 Stück / Set = 3 pieces	
H	SW	Gewinde / thread	kg	article no.	
5	17	M8 / (M10)	0.05	KWS-58 (KWS-510)	
10	17	M8 / (M10)	0.08	KWS-108 (KWS-1010)	
15	17	M8 / (M10)	0.11	KWS-158 (KWS-1510)	
20	17	M8 / (M10)	0.13	KWS-208 (KWS-2010)	

Doppelte Nutensteine passend für B-212 / Double T-Nuts for B-212		Satz = 3 Stück / Set = 3 pieces	
		kg	article no.
		0.44	TNS-B212

Version : 07/2013

Druckfehler, Irrtümer und Änderungen vorbehalten / Misprints and errors excepted

Kitagawa

EUROPE

B-212

Accessories



Chuck size	12" (304mm)
Bore size	91mm
Gripping force kN (kgf)	144 (14686)
Jaw stroke (diameter)	10.6mm
Plunger Stroke	23mm
Matching cylinder	S2091

Part	Description	
EJ-B212	Dust cover ejector	
BUNG-B212	Chuck Bung	
KJB-12 KTL-160	Jaw Boring Ring	
GREASE 400g	400g Grease cartridge	
GUN-K5PRO	Grease Gun	
KGFM-72	Dynamic Grip Meter 72mm	
KGFM-125	Dynamic Grip Meter 125mm	
DN-B212	Blank Drawtube Connector	
DR-B212	Threaded drawtube connector	
CV-B212	Cover Plate	